



THE SCHOOL FOR
AROMATIC STUDIES

AROMATIC STUDIES



Monograph Database

BY JADE SHUTES

Each essential oil monograph includes:

1 BOTANICAL INFORMATION

Common name/s:
Scientific name:
Botanical family:
Conservation status:
Botanical description:
Ethnobotany:

2 EXTRACTION INFORMATION

Country of origin:
Part of plant used:
Extraction method:
Yield:
Color of oil:

3 MANUFACTURING INFORMATION

CAS number:
EC number:
INCI number:
COSING (functions):
Fragrance Allergens:
FDA Regulations:

4 AROMATIC CHEMISTRY

Core components found in the essential oil.

5 SAFETY INFORMATION

Up to date Safety information.

6 THERAPEUTIC ACTIONS

This section details the possible therapeutic activities of the essential oil.

7 SYSTEM AFFINITIES

In this section, we list the core systems of the body for which the essential oil has an affinity.

8 BLENDING INFORMATION

In this section, we list the core systems of the body for which the essential oil has an affinity.

9 CORE INDICATIONS

This section lists the most common contemporary and traditional uses of the essential oil.

10 RESEARCH

The Aromatic Studies monographs clearly identify Clinical studies, Animal studies, and In vitro studies.

CURRENT 'MENU'

Essential Oils

Ammi visnaga	Frankincense (<i>B. sacra</i>)
Angelica root	Geranium
Anise	Ginger
Basil ct. linalool	Goldenrod
Bergamot	Grapefruit
Black pepper	Helichrysum italicum
Blue Tansy	Inula
Cape chamomile	Jasmine absolute
Cardamom	Juniper berry
Carrot seed	Laurel
Cedarwood	Lavender
Celery seed	Lemon
Chamomile, German	Lemongrass
Chamomile, Roman	Lemongrass, East Indian
Cinnamon bark	Lime
Cinnamon leaf	<i>Litsea cubeba</i> (May chang)
Cistus	Mandarin
Citronella	Marjoram, Sweet
Clary sage	Melissa
Clove bud	Monarda fistulosa
Copaiba	Myrrh
Coriander seed	Myrtle, Green
Cypress	Neroli
Lemon Eucalyptus	Niaouli
Eucalyptus globulus	Nutmeg
Eucalyptus radiata	Orange, Sweet
Sweet fennel	Palmarosa
Fingerroot	Patchouli
Fir, Balsam	Peppermint
Fir, Douglas	Petitgrain
Fir, Silver	



CURRENT 'MENU'

Essential Oils

Pinyon Pine
Pine, Scots
Ravintsara ct. cineole
Rose
Rosemary
Sage, White
Sandalwood
Saro
Spearmint
Spruce, Black
Tarragon
Tea tree
Thyme
Turmeric
Valerian
Vetiver
Wintergreen
Winter savory
Ylang ylang
Yuzu



Each CO2 Extract monograph includes*:

1 BOTANICAL INFORMATION

Common name/s:
Scientific name:
Botanical family:
Conservation status:
Botanical description:
Ethnobotany:

2 EXTRACTION INFORMATION

Country of origin:
Part of plant used:
Extraction method:
Yield:
Color of oil:

3 AROMATIC OR PHYTOCHEMISTRY OR NUTRIENT PROFILE

Core components found in the CO2 extract

4 SAFETY INFORMATION

Up to date and relevant safety information.

- Monograph Information may vary.

5 THERAPEUTIC ACTIONS

This section details the possible therapeutic activities of the essential oil.

6 SYSTEM AFFINITIES

When relevant we provide systems the CO2 extract has an affinity to.

7 FORMULATING WITH

Provides Palette category: Essential oil palette, Carrier oil palette, Herbal oil palette. Along with other valuable information for formulating with.

8 CORE INDICATIONS

This section lists the most common contemporary and traditional uses of the CO2 extract.

9 RESEARCH

The Aromatic Studies monographs clearly identify Clinical studies, Animal studies, and In vitro studies.

OPENING 'MENU'


CO2 Extracts

Arnica CO2 Total Extract
Angelica root CO2 Select Extract
Calendula CO2 Total Extract
Cardamom CO2 total extract
Celery seed CO2 Select Extract
Cinnamon bark CO2 Select Extract
Clove bud CO2 Select Extract
Cocoa CO2 Select Extract
Coconut CO2 Select Extract
Coriander seed CO2 Select Extract
Ginger CO2 Select and Total extract
Jasmine CO2 Select Extract
Juniper berry CO2 Select Extract
Lavender CO2 Select Extract
Pomegranate CO2 Total Extract
Raspberry Seed CO2 Total Extract
Rose CO2 Select extract
Rose Hip Seed CO2 Total Extract
Turmeric CO2 Total Extract
Vanilla CO2 Total Extract

The following CO2's are online but pdf is currently being edited. PDF's will be placed as they are complete.

Caraway CO2 Select extract
Coffee CO2 Total Extract
Frankincense CO2 Select Extract
German chamomile CO2 Total and Select Extract
Sea Buckthorn Seed CO2 Total Extract
Sea Buckthorn Pulp CO2 Total Extract





Each Carrier Oil monograph includes:

1 BOTANICAL INFORMATION

Common name/s:
Scientific name:
Botanical family:
Conservation status:
Botanical description:
Ethnobotany:

2 EXTRACTION INFORMATION

Country of origin:
Part of plant used:
Oil content:
Extraction method:

3 MANUFACTURING INFORMATION

CAS, EC, INCI, COSING

4 SHELF LIFE AND STORAGE

5 NUTRIENT PROFILE

Cover fatty acids and Unsaponifiable fractions.

6 FORMULATING WITH

Sensory info:
Absorption rate:
Dilution:
Therapeutic applications

7 FORMULATING WITH

Provides Palette category: Essential oil palette, Carrier oil palette, Herbal oil palette. Along with other valuable information for formulating with.

OPENING 'MENU'

Carrier Oils

Almond, Sweet

Apricot kernel

Argan

Avocado

Babassu

Baobab

Black cumin

Borage

Castor

Cocoa butter

Coconut

Cupuacu butter

Evening Primrose

Hemp

Joboba

Kombo butter

Kpangnan butter

Marula

Meadowfoam

Neem

Olive

Pomegranate seed

Pumpkin seed

Rosehip seed

Sacha Inchi

Safflower

Sea Buckthorn pulp

Sea Buckthorn seed

Sesame

Shea butter

Sunflower

Tamanu

Coming soon!

Grapeseed

Hazelnut

Palm kernel



OPENING 'MENU'

Herbal Oils

Arnica

Calendula

Carrot root

Chickweed

Comfrey

Cottonwood

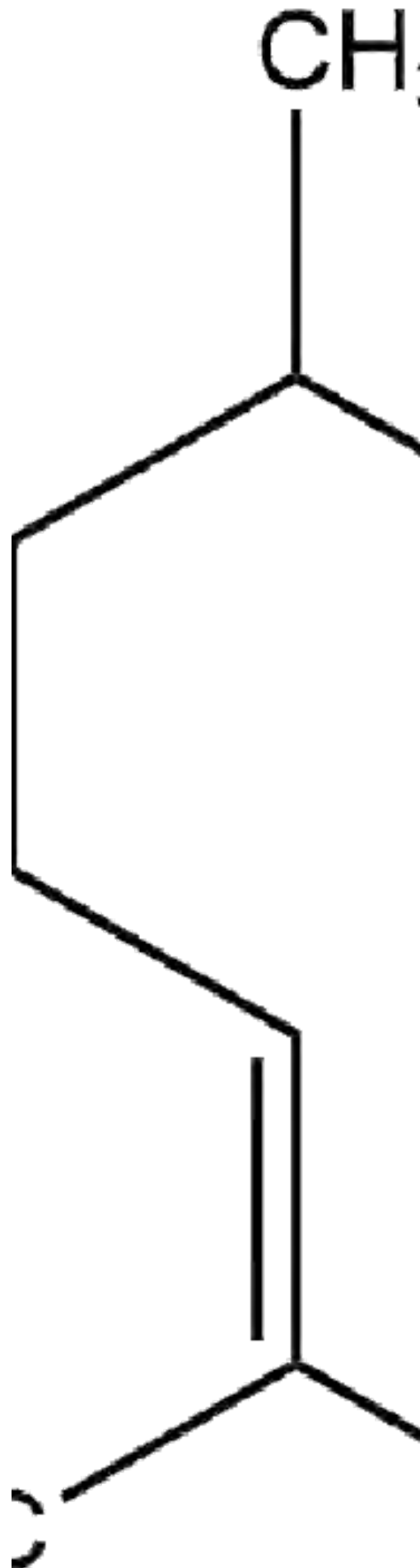
St. John's Wort



OPENING 'MENU'

Components

a-humulene	citronellal
a-pinene	citronellol
a-terpineol	d-limonene
ar-turmerone	delta-3-carene
b-caryophyllene	eucalyptol
b-caryophyllene oxide	eugenol
b-elemene	fenchone
b-pinene	geranial
b-sesquiphellandrene	geraniol
benzyl benzoate	geranyl acetate
bisabolol	guaiazulene
borneol	linalool
bornyl acetate	linalyl acetate
camphene	menthol
camphor	methyl salicylate
carotol	myrcene
carvacrol	neral
carvone	p-cymene
cedrol	patchouli alcohol
chamazulene	rose oxide
cinnamic aldehyde	sabinene
citral	sclareol
	terpinen-4-ol
	terpinolene
	thymol
	trans-anethole
	zingerberene



COMING UP!

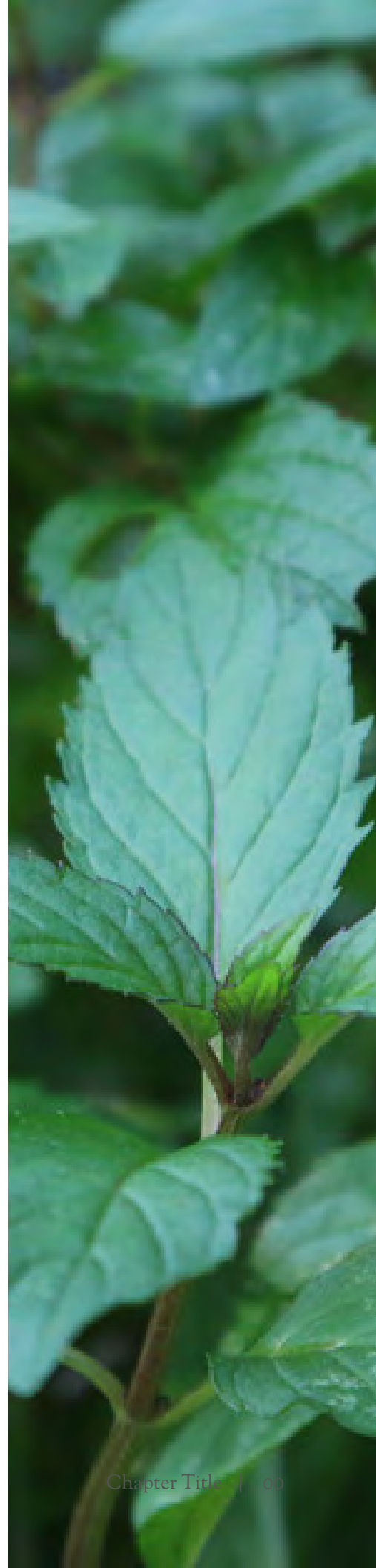
Essential Oils

Katafray
Monarda didyma
Plai
Rose absolute
and more!

Other

monographs

benzyl acetate
menthone
methyl chavicol
methyl eugenol
phenylethanol
pulegone
santalol
thujone





SUBSCRIBE TO THE
AROMATIC STUDIES
MONOGRAPH DATABASE!!



AROMATICSTUDIES.COM