



THE SCHOOL FOR
AROMATIC STUDIES

AROMATIC STUDIES



Monograph Database

BY JADE SHUTES

Each essential oil monograph includes:

1 BOTANICAL INFORMATION

Common name/s:
Scientific name:
Botanical family:
Conservation status:
Botanical description:
Ethnobotany:

2 EXTRACTION INFORMATION

Country of origin:
Part of plant used:
Extraction method:
Yield:
Color of oil:

3 MANUFACTURING INFORMATION

CAS number:
EC number:
INCI number:
COSING (functions):
Fragrance Allergens:
FDA Regulations:

4 AROMATIC CHEMISTRY

Core components found in the essential oil.

5 SAFETY INFORMATION

Up to date Safety information.

6 THERAPEUTIC ACTIONS

This section details the possible therapeutic activities of the essential oil.

7 SYSTEM AFFINITIES

In this section, we list the core systems of the body for which the essential oil has an affinity.

8 BLENDING INFORMATION

In this section, we list the core systems of the body for which the essential oil has an affinity.

9 CORE INDICATIONS

This section lists the most common contemporary and traditional uses of the essential oil.

10 RESEARCH

The Aromatic Studies monographs clearly identify Clinical studies, Animal studies, and In vitro studies.

OPENING 'MENU'

Essential Oils

Ammi visnaga	Jasmine absolute
Angelica root	Juniper berry
Anise	Laurel
Bergamot	Lavender
Black pepper	Lemon
Blue Tansy	Lemongrass
Cape chamomile	Lime
Cardamom	Mandarin
Carrot seed	Marjoram, Sweet
Cedarwood	Melissa
Chamomile, Roman	Nutmeg
Cinnamon bark	Orange, Sweet
Cistus	Palmarosa
Citronella	Patchouli
Clary sage	Peppermint
Clove bud	Petitgrain
Copaiba	Pine, Scots
Coriander seed	Rose
Cypress	Saro
Lemon Eucalyptus	Spruce, Black
Eucalyptus globulus	Tea tree
Eucalyptus radiata	Turmeric
Sweet fennel	Valerian
Geranium	Vetiver
Ginger	Wintergreen
Goldenrod	Winter savory
Grapefruit	Ylang ylang
Helichrysum italicum	Yuzu
Inula	



Each CO2 Extract monograph includes*:

1 BOTANICAL INFORMATION

Common name/s:
Scientific name:
Botanical family:
Conservation status:
Botanical description:
Ethnobotany:

2 EXTRACTION INFORMATION

Country of origin:
Part of plant used:
Extraction method:
Yield:
Color of oil:

3 AROMATIC OR PHYTOCHEMISTRY OR NUTRIENT PROFILE

Core components found in the CO2 extract

4 SAFETY INFORMATION

Up to date and relevant safety information.

- Monograph Information may vary.

5 THERAPEUTIC ACTIONS

This section details the possible therapeutic activities of the essential oil.

6 SYSTEM AFFINITIES

When relevant we provide systems the CO2 extract has an affinity to.

7 FORMULATING WITH

Provides Palette category: Essential oil palette, Carrier oil palette, Herbal oil palette. Along with other valuable information for formulating with.

8 CORE INDICATIONS

This section lists the most common contemporary and traditional uses of the CO2 extract.

9 RESEARCH

The Aromatic Studies monographs clearly identify Clinical studies, Animal studies, and In vitro studies.

OPENING 'MENU'

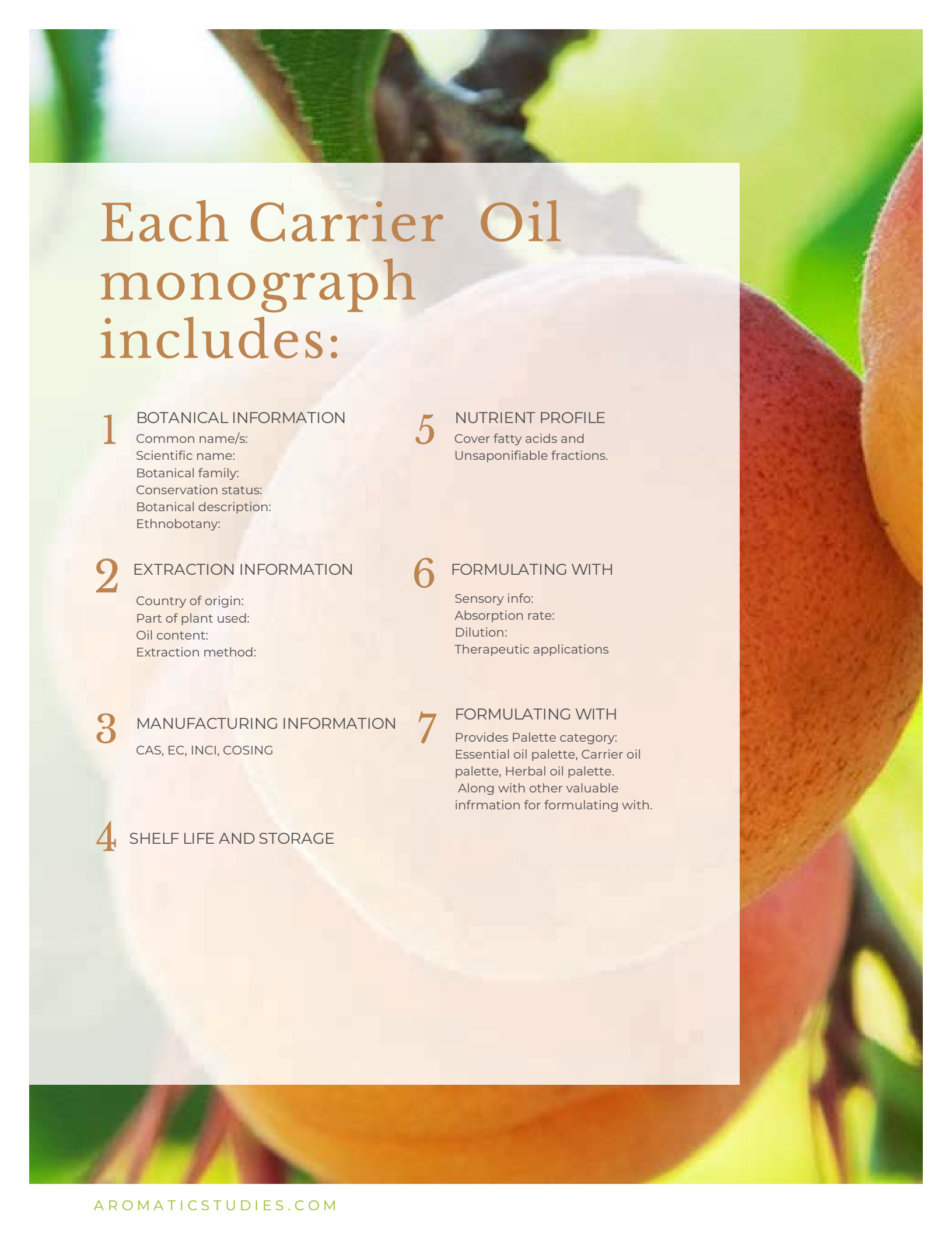
CO2 Extracts

Arnica CO2 Total Extract
Angelica root CO2 Select Extract
Calendula CO2 Total Extract
Cardamom CO2 total extract
Celery seed CO2 Select Extract
Cinnamon bark CO2 Select Extract
Clove bud CO2 Select Extract
Cocoa CO2 Select Extract
Coriander seed CO2 Select Extract
Jasmine CO2 Select Extract
Juniper berry CO2 Select Extract
Lavender CO2 Select Extract
Pomegranate CO2 Total Extract
Raspberry Seed CO2 Total Extract
Turmeric CO2 Total Extract
Vanilla CO2 Total Extract

The following CO2's are online but pdf is currently being edited. PDF's will be placed as they are complete.

Caraway CO2 Select extract
Coconut CO2 Select Extract
Coffee CO2 Total Extract
Frankincense CO2 Select Extract
German chamomile CO2 Total and Select Extract
Ginger CO2 Select and Total extract
Rose CO2 Select extract
Rose Hip Seed CO2 Total Extract
Sea Buckthorn CO2 Total Extract





Each Carrier Oil monograph includes:

1 BOTANICAL INFORMATION

Common name/s:
Scientific name:
Botanical family:
Conservation status:
Botanical description:
Ethnobotany:

5 NUTRIENT PROFILE

Cover fatty acids and
Unsaponifiable fractions.

2 EXTRACTION INFORMATION

Country of origin:
Part of plant used:
Oil content:
Extraction method:

6 FORMULATING WITH

Sensory info:
Absorption rate:
Dilution:
Therapeutic applications

3 MANUFACTURING INFORMATION

CAS, EC, INCI, COSING

7 FORMULATING WITH

Provides Palette category:
Essential oil palette, Carrier oil
palette, Herbal oil palette.
Along with other valuable
information for formulating with.

4 SHELF LIFE AND STORAGE

OPENING 'MENU'

Carrier Oils

Apricot kernel
Argan
Avocado
Baobab
Borage
Castor
Coconut
Evening Primrose
Jojoba
Marula
Pomegranate seed
Pumpkin seed
Rosehip seed
Safflower
Sea Buckthorn
Sesame
Tamanu

The following CO2's are online but pdf is currently being edited. PDF's will be placed as they are complete.

Grapeseed
Hazelnut
Hemp
Neem
Olive
Palm kernel
Sunflower



OPENING 'MENU'

Herbal Oils

Arnica

Calendula

Carrot root

Chickweed

Comfrey

Cottonwood

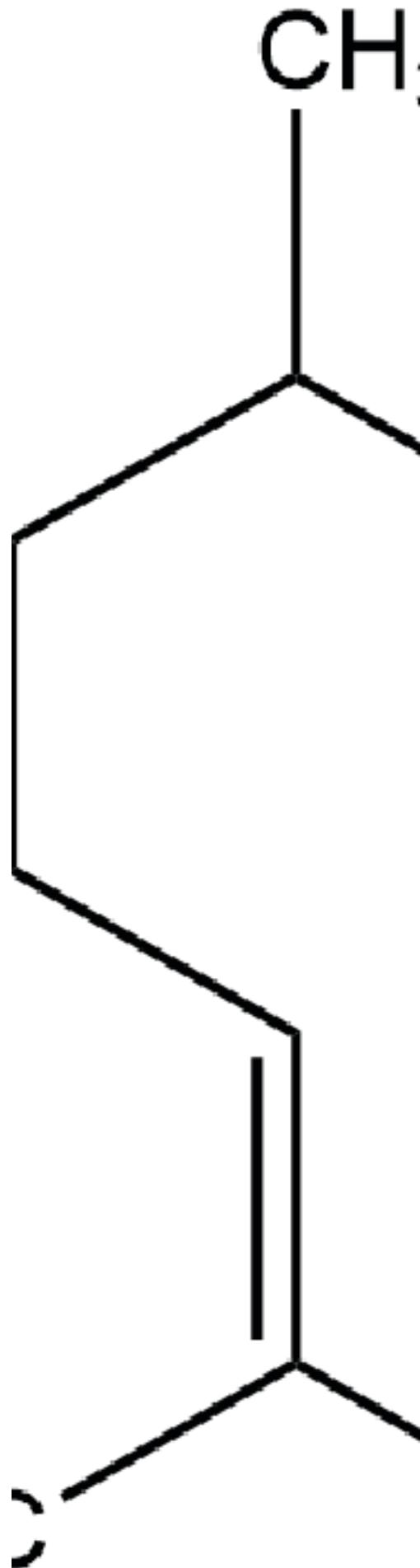
St. John's Wort



OPENING 'MENU'

Components

a-humulene	citronellal
a-pinene	citronellol
a-terpineol	d-limonene
ar-turmerone	delta-3-carene
b-caryophyllene	eucalyptol
b-elemene	eugenol
b-pinene	fenchone
b-sesquiphellandrene	geranial
benzyl acetate	geraniol
benzyl benzoate	geranyl acetate
bisabolol	guaiazulene
borneol	linalool
bornyl acetate	linalyl acetate
camphene	methyl salicylate
camphor	myrcene
carotol	neral
carvacrol	p-cymene
carvone	patchouli alcohol
cedrol	rose oxide
chamazulene	sabinene
cinnamic aldehyde	sclareol
citral	terpinen-4-ol
	terpinolene
	thymol
	trans-anethole
	zingerberene



COMING UP!

Essential Oils

Basil ct. linalool
German chamomile
Clove bud
Fingerroot
Fir, Douglas
Frankincense
Katafray
Litsea cubeba
Monarda didyma
Green myrtle
Neroli
Niaouli
Pinyon Pine
Plai
Rose absolute
and more!

Other

monographs

benzyl acetate

linalyl acetate
menthol
menthone
methyl chavicol
methyl eugenol
Phenylethanol
pulegone
santalol
thujone

*We'll be adding in the
fatty acids and
Unsaponifiable fraction
components
throughout the winter
months.*





SUBSCRIBE TO THE
AROMATIC STUDIES
MONOGRAPH DATABASE!!



AROMATICSTUDIES.COM