



THE SCHOOL FOR
AROMATIC STUDIES

AROMATIC STUDIES



Monograph Database

BY JADE SHUTES

Each essential oil monograph includes:

1 BOTANICAL INFORMATION

Common name/s:
Scientific name:
Botanical family:
Conservation status:
Botanical description:
Ethnobotany:

2 EXTRACTION INFORMATION

Country of origin:
Part of plant used:
Extraction method:
Yield:
Color of oil:

3 MANUFACTURING INFORMATION

CAS number:
EC number:
INCI number:
COSING (functions):
Fragrance Allergens:
FDA Regulations:

4 AROMATIC CHEMISTRY

Core components found in the essential oil.

5 SAFETY INFORMATION

Up to date Safety information.

6 THERAPEUTIC ACTIONS

This section details the possible therapeutic activities of the essential oil.

7 SYSTEM AFFINITIES

In this section, we list the core systems of the body for which the essential oil has an affinity.

8 BLENDING INFORMATION

In this section, we list the core systems of the body for which the essential oil has an affinity.

9 CORE INDICATIONS

This section lists the most common contemporary and traditional uses of the essential oil.

10 RESEARCH

The Aromatic Studies monographs clearly identify Clinical studies, Animal studies, and In vitro studies.

OPENING 'MENU'

Essential Oils

Ammi visnaga	Jasmine absolute
Angelica root	Juniper berry
Anise	Lavender
Bergamot	Lemon
Black pepper	Lemongrass
Blue Tansy	Melissa
Cape chamomile	Patchouli
Cardamom	Peppermint
Carrot seed	Petitgrain
Chamomile, Roman	Rose
Cinnamon bark	Tea tree
Cistus	Winter savory
Clary sage	
Coriander seed	
Cypress	
Lemon Eucalyptus	
Eucalyptus globulus	
Sweet fennel	
Geranium	
Ginger	
Grapefruit	
Helichrysum italicum	
Inula	



Each CO2 Extract monograph includes*:

1 BOTANICAL INFORMATION

Common name/s:
Scientific name:
Botanical family:
Conservation status:
Botanical description:
Ethnobotany:

2 EXTRACTION INFORMATION

Country of origin:
Part of plant used:
Extraction method:
Yield:
Color of oil:

3 AROMATIC OR PHYTOCHEMISTRY OR NUTRIENT PROFILE

Core components found in the CO2 extract

4 SAFETY INFORMATION

Up to date and relevant safety information.

- Monograph Information may vary.

5 THERAPEUTIC ACTIONS

This section details the possible therapeutic activities of the essential oil.

6 SYSTEM AFFINITIES

When relevant we provide systems the CO2 extract has an affinity to.

7 FORMULATING WITH

Provides Palette category: Essential oil palette, Carrier oil palette, Herbal oil palette. Along with other valuable information for formulating with.

8 CORE INDICATIONS

This section lists the most common contemporary and traditional uses of the CO2 extract.

9 RESEARCH

The Aromatic Studies monographs clearly identify Clinical studies, Animal studies, and In vitro studies.

OPENING 'MENU'

CO2 Extracts

Arnica CO2 Total Extract

Angelica root CO2 Select Extract

Calendula CO2 Total Extract

Jasmine CO2 Select Extract

Juniper berry CO2 Select Extract

Pomegranate CO2 Total Extract

Vanilla CO2 Total Extract

The following CO2's are online but pdf is currently being edited. PDF's will be placed as they are complete.

Caraway CO2 Select extract

Cardamom CO2 total extract

Celery seed CO2 Select Extract

Cinnamon bark CO2 Select Extract

Clove bud CO2 Select Extract

Cocoa CO2 Select Extract

Coconut CO2 Select Extract

Coffee CO2 Total Extract

Coriander seed CO2 Select Extract

Frankincense CO2 Select Extract

German chamomile CO2 Total and Select Extract

Ginger CO2 Select and Total extract

Lavender CO2 Select Extract

Raspberry Seed CO2 Total Extract

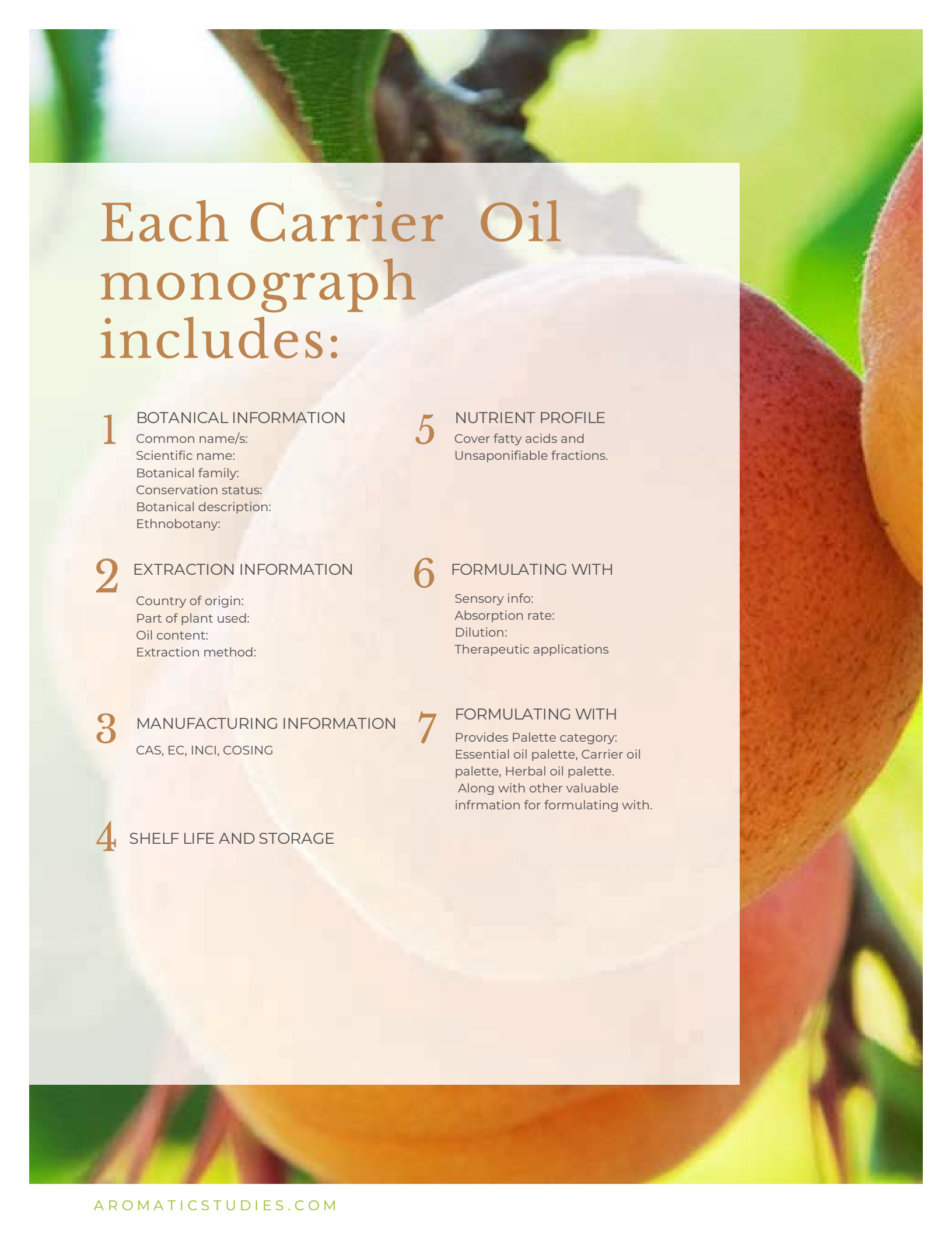
Rose CO2 Select extract

Rose Hip Seed CO2 Total Extract

Sea Buckthorn CO2 Total Extract

Turmeric CO2 Total Extract





Each Carrier Oil monograph includes:

1 BOTANICAL INFORMATION

Common name/s:
Scientific name:
Botanical family:
Conservation status:
Botanical description:
Ethnobotany:

2 EXTRACTION INFORMATION

Country of origin:
Part of plant used:
Oil content:
Extraction method:

3 MANUFACTURING INFORMATION

CAS, EC, INCI, COSING

4 SHELF LIFE AND STORAGE

5 NUTRIENT PROFILE

Cover fatty acids and
Unsaponifiable fractions.

6 FORMULATING WITH

Sensory info:
Absorption rate:
Dilution:
Therapeutic applications

7 FORMULATING WITH

Provides Palette category:
Essential oil palette, Carrier oil
palette, Herbal oil palette.
Along with other valuable
information for formulating with.

OPENING 'MENU'

Carrier Oils

Apricot kernel

Argan

Avocado

Borage

Castor

Coconut

Evening Primrose

Tamanu

The following CO2's are online but pdf is currently being edited. PDF's will be placed as they are complete.

Baobab

Grapeseed

Hazelnut

Hemp

Jojoba

Marula

Neem

Olive

Palm kernel

Pomegranate seed

Pumpkin seed

Rosehip seed

Safflower

Sea Buckthorn

Sesame

Sunflower



OPENING 'MENU'

Herbal Oils

Arnica

Calendula

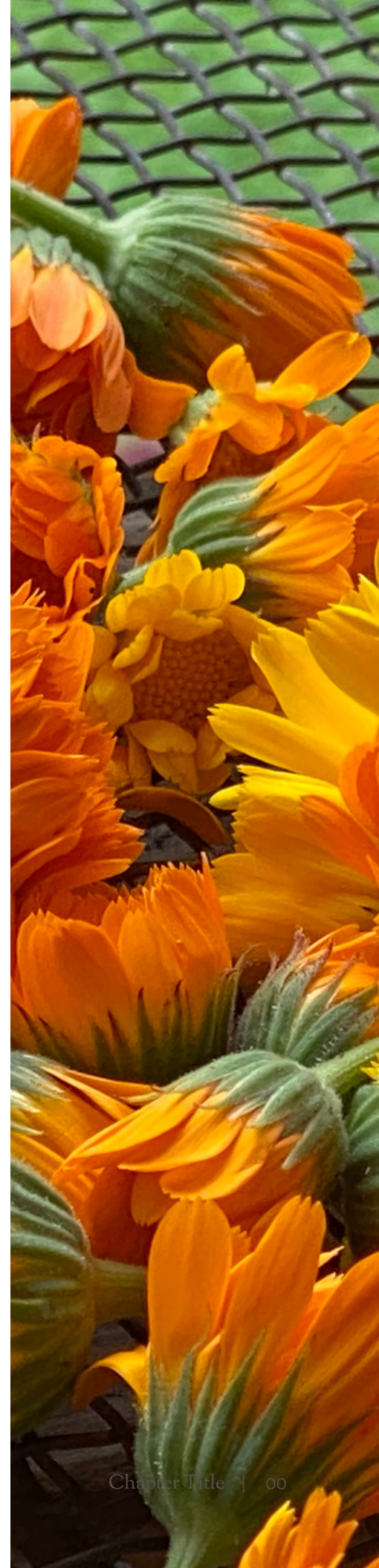
Carrot root

Chickweed

Comfrey

Cottonwood

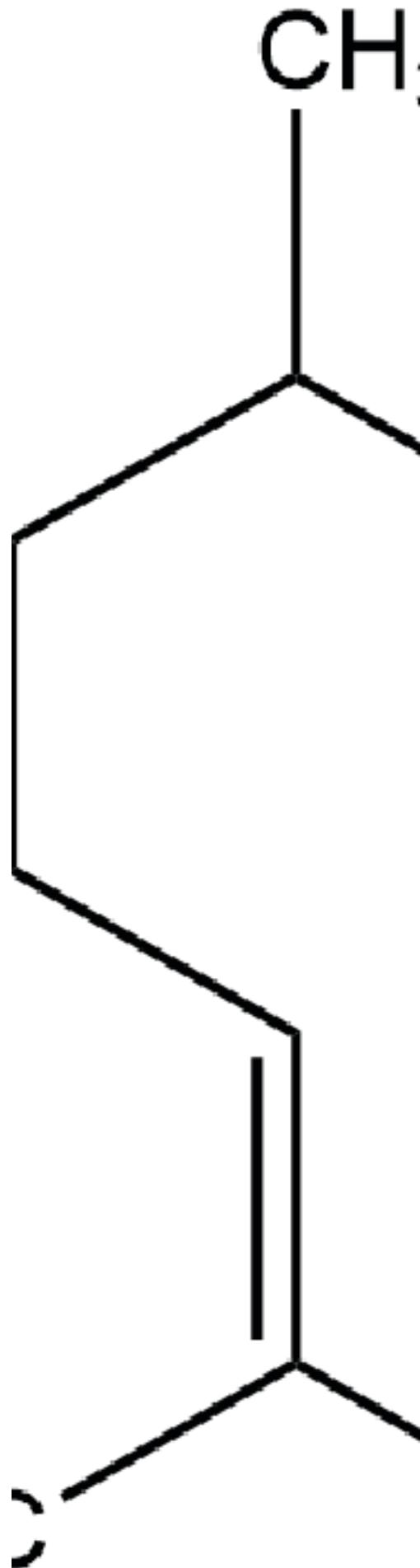
St. John's Wort



OPENING 'MENU'

Components

a-humulene	citronellal
a-pinene	citronellol
a-terpineol	d-limonene
ar-turmerone	delta-3-carene
b-caryophyllene	eucalyptol
b-elemene	eugenol
b-pinene	fenchone
b-sesquiphellandrene	geranial
benzyl acetate	geraniol
benzyl benzoate	linalool
bisabolol	myrcene
borneol	neral
bornyl acetate	p-cymene
camphene	patchouli alcohol
camphor	sabinene
carotol	sclareol
carvacrol	terpinen-4-ol
carvone	terpinolene
cedrol	thymol
chamazulene	trans-anethole
cinnamic aldehyde	zingerberene
citral	



COMING UP!

Essential Oils

Basil ct. linalool
Cedarwood
German chamomile
Cistus
Citronella
Clove bud
Copaiba
Fingerroot
Fir, Douglas
Frankincense
Katafray
Laurel
Lemon
Litsea cubeba
Mandarin
Monarda didyma
Green myrtle
Sweet orange
Palmarosa
Pine, Scots
Pinyon Pine
Plai
Rose absolute
and more!

Other

monographs

b-caryophyllene
benzyl acetate
geranyl acetate
linalyl acetate
menthol
menthone
methyl chavicol
methyl eugenol
methyl salicylate
Phenylethanol
pulegone
rose oxide
santalol
terpinen-4-ol
thujone

*We'll be adding in the
fatty acids and
Unsaponifiable fraction
components
throughout the winter
months.*





SUBSCRIBE TO THE
AROMATIC STUDIES
MONOGRAPH DATABASE!!



AROMATICSTUDIES.COM